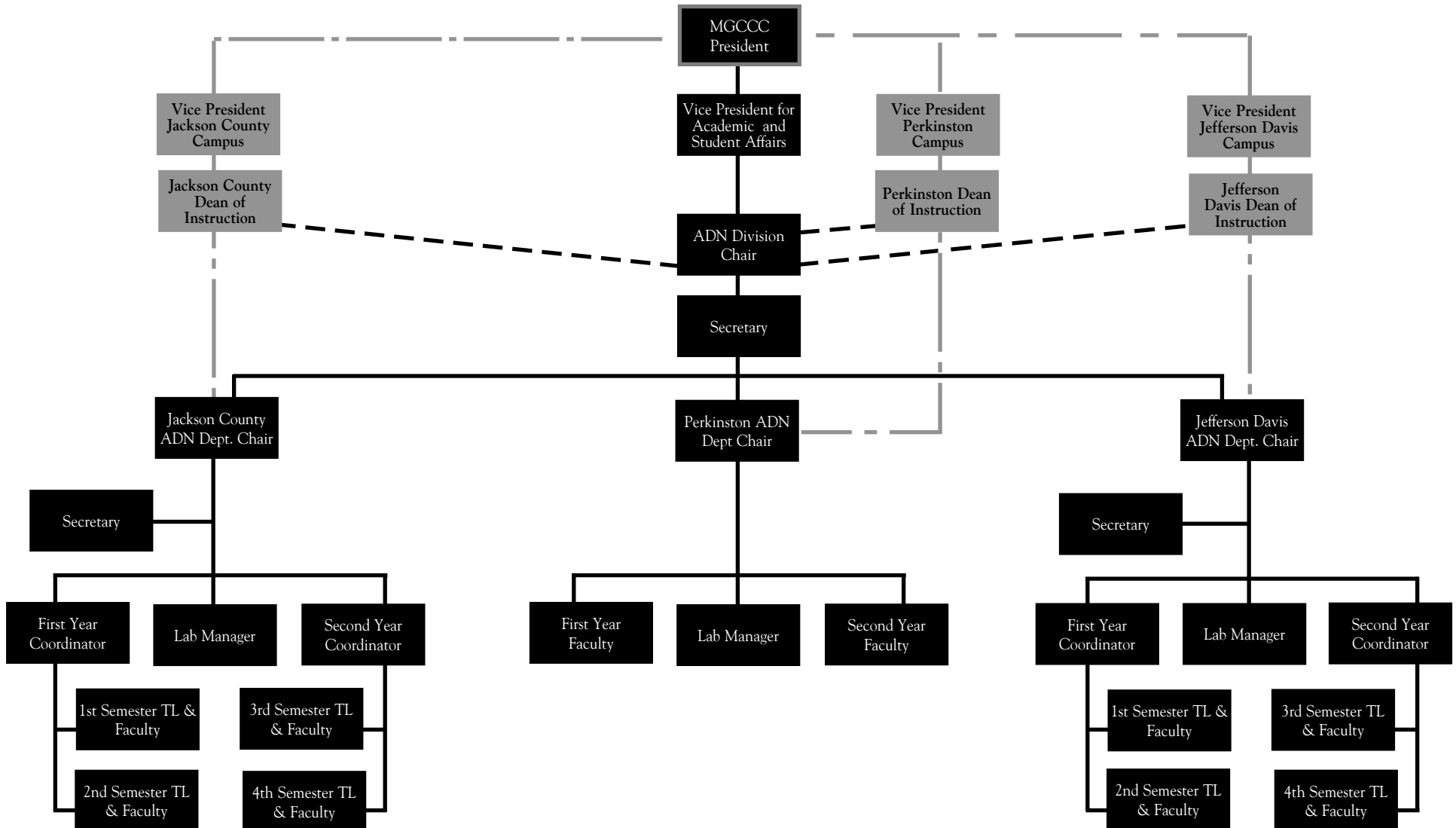




Associate Degree Nursing Division Organizational Chart

CAMPUS WORKFLOW: Campus management decisions or issues affecting only one campus (e.g. registration, classroom assignments) flow to/from the campus ADN Department Chairperson through the campus Dean of Instruction to/from the campus Vice President. Campus-specific issues are reported to the campus Dean of Instruction and copied to the ADN Division Chairperson.

NURSING DIVISION WORKFLOW: Nursing or program related issues (e.g. curriculum, ADN Admission Policy and other nursing policies and procedures) flow to/from each campus ADN Department Chairperson to/from the ADN Division Chairperson to/from the Vice President for Academic and Student Affairs. Anything “nursing” or “division-wide” is reported to the ADN Division Chairperson and copied to the Deans of Instruction on each campus.





Associate Degree Nursing Division Organizational Chart

CAMPUS WORKFLOW: Campus management decisions or issues affecting only one campus (e.g. registration, classroom assignments) flow to/from the campus ADN Department Chairperson through the campus Dean of Instruction to/from the campus Vice President. Campus-specific issues are reported to the campus Dean of Instruction and copied to the ADN Division Chairperson.

NURSING DIVISION WORKFLOW: Nursing or program related issues (e.g. curriculum, ADN Admission Policy and other nursing policies and procedures) flow to/from each campus ADN Department Chairperson to/from the ADN Division Chairperson to/from the Vice President for Academic and Student Affairs. Anything "nursing" or "division-wide" is reported to the ADN Division Chairperson and copied to the Deans of Instruction on each campus.

